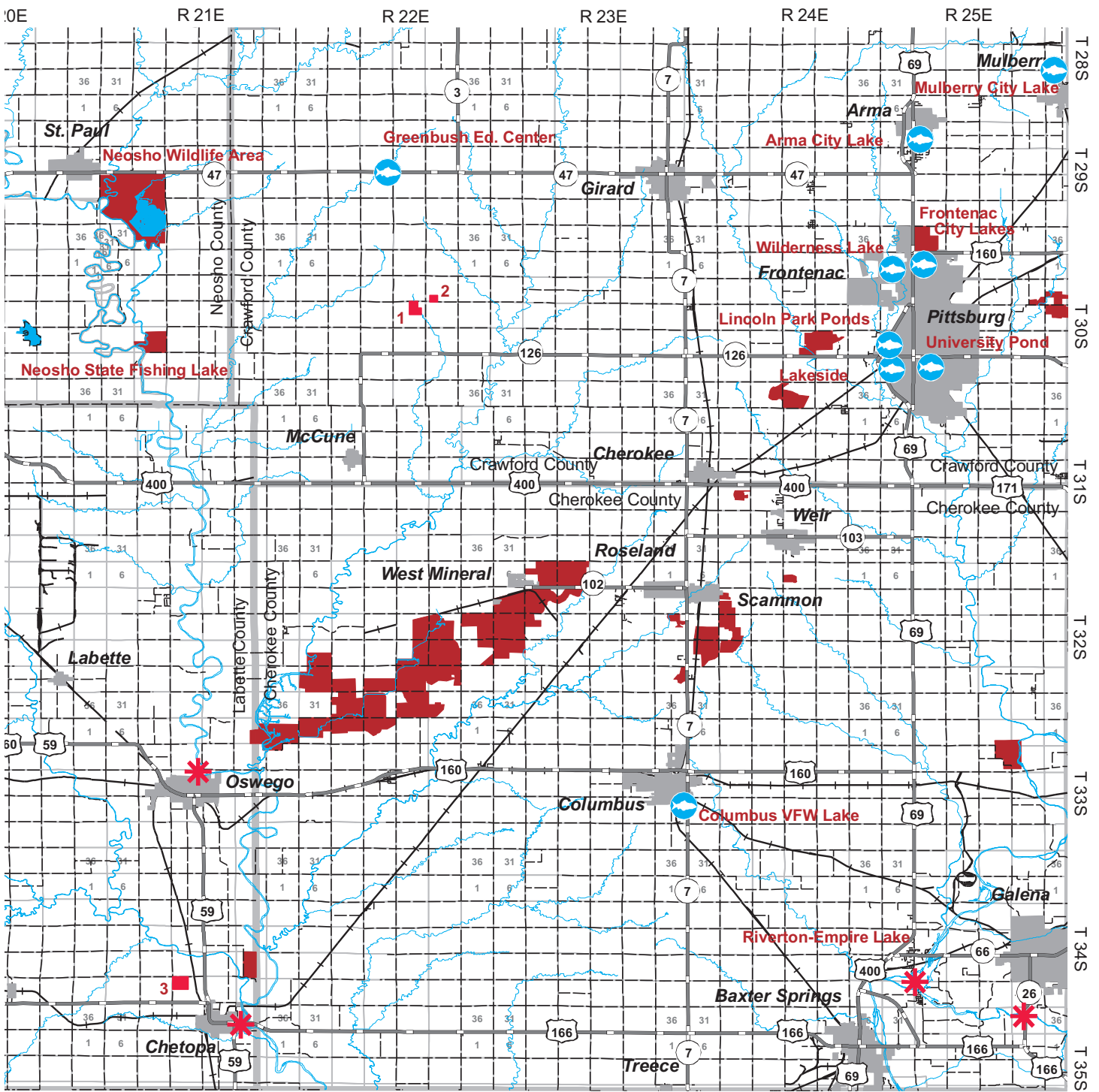


1	2	3	4	5	6
7	8	9	10	11	12
13	14	15	16	17	18
19	20	21	22	23	24
25	26	27	28	29	30

MAP 30

FISHING ATLAS LEGEND

Reservoirs, Community Lakes, and State Fishing Lakes (NO Additional Fees Required)		U.S. Fish and Wildlife Service National Wildlife Refuges	
F.I.S.H. Tracts (March 1 - Oct. 31)	1 2 3	U.S. Army Corps of Engineers	
F.I.S.H. Tracts (Year-round)	1 2 3	U.S. Army	
Community Lakes (Local Permit Required)		U.S. Forest Service	
Streams, Rivers and Access Points		KDWPT Public Wildlife Areas (Managed Fishing Opportunities Labeled)	
		KDWPT State Parks	



The information provided below is intended to inform anglers about conditions that may affect fishing. A detailed index, in the back of this atlas, includes water type, species list, and boat restrictions.

Mined Land Wildlife Area - ANS ALERT - Eurasian Watermilfoil (see back of atlas).

 Family Friendly Facilities: Arma City Lake.