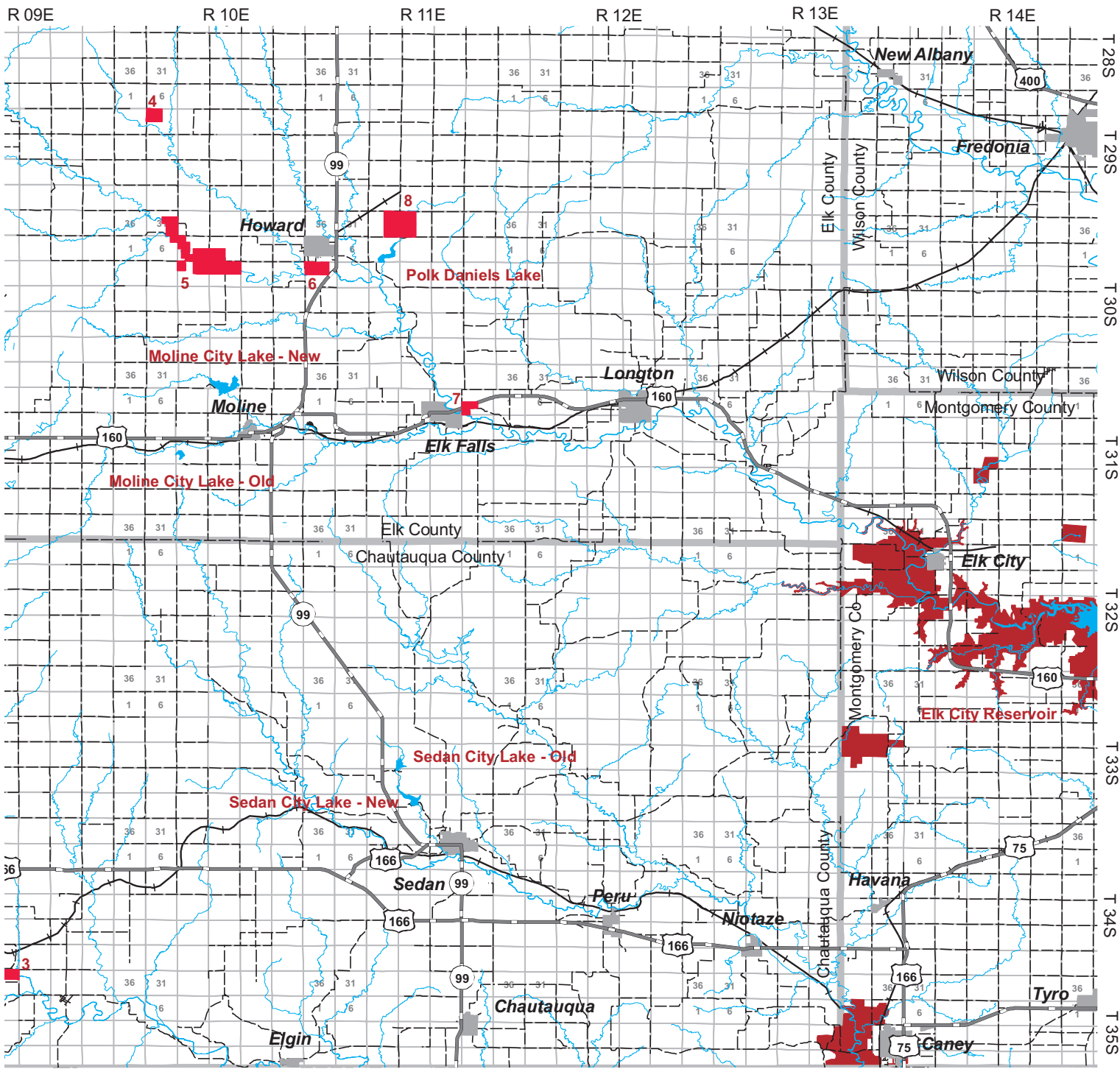


1	2	3	4	5	6
7	8	9	10	11	12
13	14	15	16	17	18
19	20	21	22	23	24
25	26	27	28	29	30

# MAP 29

## FISHING ATLAS LEGEND

<b>Reservoirs, Community Lakes, and State Fishing Lakes</b> (NO Additional Fees Required)		<b>U.S. Fish and Wildlife Service National Wildlife Refuges</b>	
<b>F.I.S.H. Tracts</b> (March 1 - Oct. 31)		<b>U.S. Army Corps of Engineers</b>	
<b>F.I.S.H. Tracts</b> (Year-round)		<b>U.S. Army</b>	
<b>Community Lakes</b> (Local Permit Required)		<b>U.S. Forest Service</b>	
<b>Streams, Rivers and Access Points</b>		<b>KDWPT Public Wildlife Areas</b> (Managed Fishing Opportunities Labeled)	
		<b>KDWPT State Parks</b>	



The information provided below is intended to inform anglers about conditions that may affect fishing. A detailed index, in the back of this atlas, includes water type, species list, and boat restrictions.

**Winfield City Lake - ANS ALERT - Zebra Mussels**  
 (Unlawful to possess alive, see back of atlas).