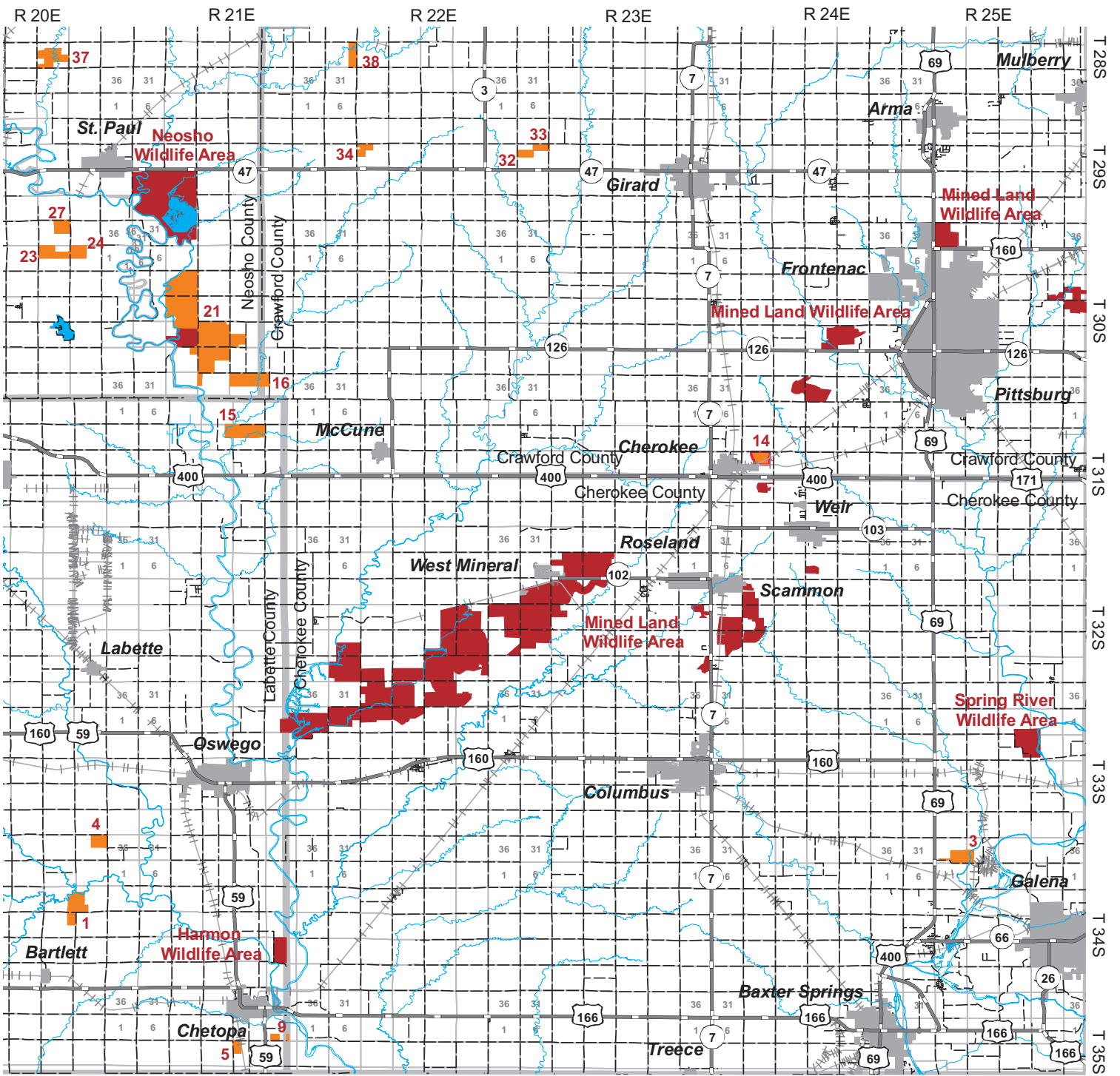


1	2	3	4	5	6
7	8	9	10	11	12
13	14	15	16	17	18
19	20	21	22	23	24
25	26	27	28	29	30

MAP 30

HUNT ATLAS LEGEND

WIHA Areas Access Dates: Nov. 1 - Jan. 31		Kansas Dept. of Wildlife & Parks State Parks	
WIHA Areas Access Dates: Sept. 1 - Jan. 31		U.S. Fish and Wildlife Service National Wildlife Refuges	
WIHA Areas Access Dates: Sept. 1 - Mar. 31		U.S. Army Corps of Engineers	
WIHA Areas (Outlined in Red) NO FIREARMS DEER HUNTING		U.S. Army	
WIHA Areas (Youth Dove) Access Dates: Sept. 1 - Sept. 30		U.S. Forest Service	
Kansas Dept. of Wildlife & Parks Public Wildlife Areas		Streams and Lakes	



This index is a guide to game species most likely to be found on these areas, but hunting opportunities are not limited to these species.

Quail

1-2, 4-7, 9, 14-38

Deer

1-31, 36-38

Dove

6-8, 11-12, 15-16, 21, 23, 32-34

Waterfowl

8, 11-12, 15-16, 22

Geese

6-8, 11-12, 15-16, 18, 21, 32-34

Rabbits

14, 17-20, 22-30, 36

Turkey

1, 5-6, 8-20, 22, 25-31, 36-38