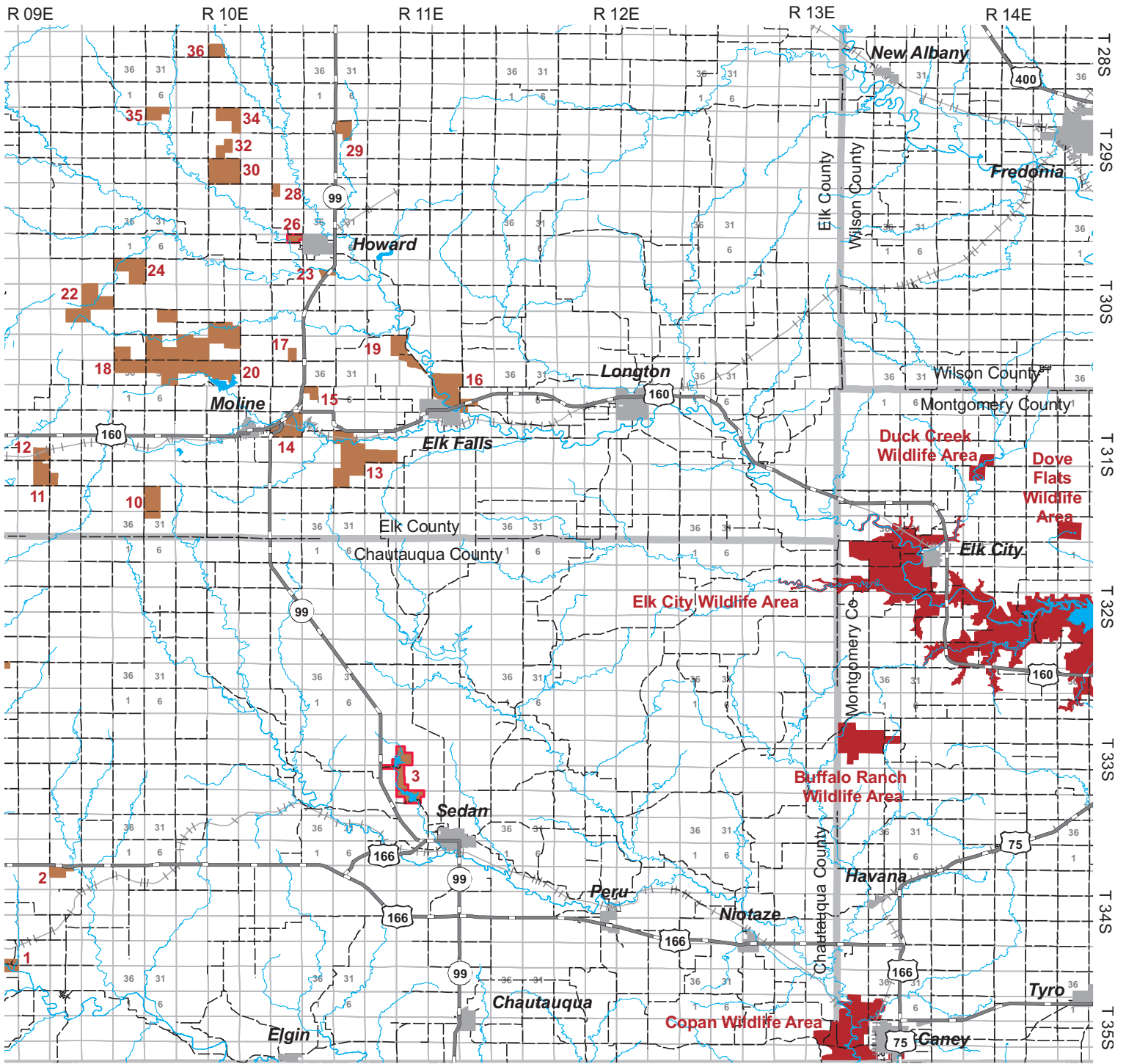


1	2	3	4	5	6
7	8	9	10	11	12
13	14	15	16	17	18
19	20	21	22	23	24
25	26	27	28	29	30

MAP 29

HUNT ATLAS LEGEND

WIHA Areas Access Dates: Nov. 1 - Jan. 31		Kansas Dept. of Wildlife & Parks State Parks	
WIHA Areas Access Dates: Sept. 1 - Jan. 31		U.S. Fish and Wildlife Service National Wildlife Refuges	
WIHA Areas Access Dates: Sept. 1 - Mar. 31		U.S. Army Corps of Engineers	
WIHA Areas (Outlined in Red) NO FIREARMS DEER HUNTING		U.S. Army	
WIHA Areas (Youth Dove) Access Dates: Sept. 1 - Sept. 30		U.S. Forest Service	
Kansas Dept. of Wildlife & Parks Public Wildlife Areas		Streams and Lakes	



This index is a guide to game species most likely to be found on these areas, but hunting opportunities are not limited to these species.

Quail

1-20, 22-24, 26, 28-33, 35-36

Deer

1-20, 22-24, 26, 28-36

Dove

3, 10, 16-19, 23-24, 26, 28

Prairie Chicken

3, 24, 31, 33

Waterfowl

3, 10, 24

Furbearers

3, 10, 16-19, 23-24, 26, 28-29, 31, 33

Geese

3

Turkey

2-3, 16, 19, 23-24, 26, 28-29

Rabbits

1-20, 22-24, 26, 28-30, 32, 34-36